



CLIVEPEARCE
Now you're moving

2 Bedrooms

House - Detached

Price Guide

£550,000

Located in

Truro



www.clivepearceproperty.com



Sunny Corner

Truro | Cornwall | TR4 8SE



A detached two double bedroom house located in an idyllic yet convenient setting with gardens of approximately an acre. Beautiful rural views and sunny, gently sloping gardens facing southeast.

Sunny Corner

£550,000 Freehold

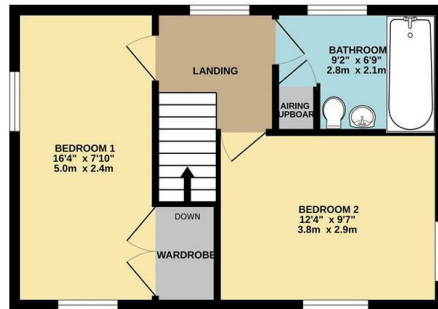


- Two bedroom rural house
- No onward chain
- Modern refitted bathroom
- Electric heating and double glazing
- Sunny valley location facing SE
- Set in approximately an acre
- Stylish refitted kitchen & utility
- Driveway and carport parking
- Ground floor cloakroom / WC
- Scope to extend (subject to planning)

GROUND FLOOR
451 sq.ft. (41.9 sq.m.) approx.



1ST FLOOR
386 sq.ft. (35.8 sq.m.) approx.



TOTAL FLOOR AREA : 837 sq.ft. (77.8 sq.m.) approx.

Whilst every attempt has been made to ensure the accuracy of the floorplan contained here, measurements of doors, windows, rooms and any other items are approximate and no responsibility is taken for any error, omission or mis-statement. This plan is for illustrative purposes only and should be used as such by any prospective purchaser. The services, systems and appliances shown have not been tested and no guarantee as to their operability or efficiency can be given.
Made with Metropix ©2025

Council Tax Band C

Local Authority

Agents Note: Whilst every care has been taken to prepare these particulars, they are for guidance purposes only. All measurements are approximate and are for general guidance purposes only and whilst every care has been taken to ensure their accuracy, they should not be relied upon and potential buyers/tenants are advised to recheck the measurements.

Energy Efficiency Rating		
	Current	Potential
Very energy efficient - lower running costs		
(92 plus) A		
(81-91) B		
(69-80) C		79
(55-68) D	62	
(39-54) E		
(21-38) F		
(1-20) G		
Not energy efficient - higher running costs		
England & Wales	EU Directive 2002/91/EC	

31 Lemon Street
Truro
Cornwall
TR1 2LS



CLIVEPEARCE
Now you're moving

hello@clivepearceproperty.com

01872 272622

www.clivepearceproperty.com